

Pretium® Connector Housing (PCH)

two rack units, holds four CCH connector panels

CORNING

The rack-mount Pretium® connector housings (PCH) are available in 1U, 2U and 4U sizes and mount in 19-in racks or cabinets. Combined with the modules, panels, harnesses, trunks and jumpers, they provide a tip-to-tip solution for your fiber optic network.

Features and Benefits

Compatible with Plug & Play™ Systems modules
Designed to support Plug & Play Systems applications

Splice in the housing
Saves rack space and the cost of the second housing

Removable top (1U, 2U)
Maximizes ease of access

Transparent front door (04U and 02U)
Permits viewing while protecting installed patch cords

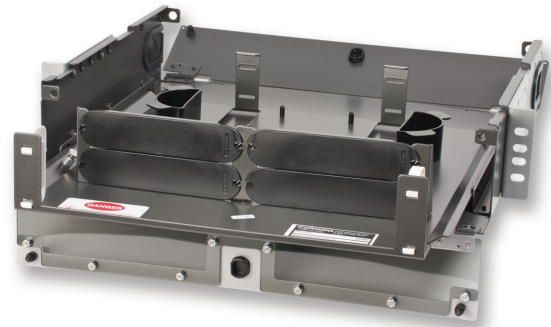
Large removable fiber guides in front
Effectively manage high patch cord densities



Part Number: PCH-02U

Standards

RoHS	Free of hazardous substances according to RoHS 2011/65/EU
UL-Listed	United States and Canadian safety standards



Part Number: PCH-02U

CORNING

Pretium® Connector Housing (PCH)

two rack units, holds four CCH connector panels

CORNING

Specifications

General Specifications

Application	Enterprise Networks, Data Center
Mounting Type	Rack 19-in, Rack 23-in
Product Type	Rack-Mountable Hardware

Design - Hardware

Housing Type	PCH
Housing Color	Gray
Height Unit	2U
Locking Availability	Front or rear
Number of Panels per Housing	4
Panel or Module Type	CCH
Splice Tray Options	6 category, 2R, 2S, 2S-Long, 3 category 4R, 4S, 4S-Wide
Fiber Capacity	Up to 48 fibers installing FC/SC/ ST® Compatible connectors, or up to 96 installing LC connectors

Mechanical Characteristics

Dimensions (W x D x H)	431.8 mm x 419.1 mm x 88.9 mm (17 in x 16.5 in x 3.5 in)
------------------------	--

Ordering Information

Part Number	PCH-02U
Product Description	Pretium® Connector Housing, 2 rack units, holds four CCH connector panels
EAN Code	4056418199597

Shipping Information

Units per Delivery	1/1
Packaging Dimensions (W x D x H)	584.2 mm x 558.8 mm x 152.4 mm (23 in x 22 in x 6 in)

Pretium® Connector Housing (PCH)

two rack units, holds four CCH connector panels

CORNING

Shipping Information

Shipping Weight	5.7 kg (12.6 lb)
Package Contents	Housing; Installation Guide; 4 blank panels; unit ID label; 2 port identification labels for 2 panels; 3 #6-32 x .25 screws; 8 #10-32 x 50 screws; 4 #12-24 x 50 screws; 8 1/8 x 4-in tie wraps, white; spiral wrap, 2 ft; central member strain-relief clamp kit; bracket for mounting UCC clamp; universal cable clamp (UCC) kit with 5 cable inserts; double-sided hook and loop strap, 5/8-in; bracket to hold BTF kit; 2 #6-32, SS nylon self-locking hex nut



Corning Optical Communications LLC • PO Box 489 • Hickory, NC 28603-0489 USA

800-743-2675 • FAX: 828-325-5060 • International: +1-828-901-5000 • www.corning.com/opcomm

A complete listing of the trademarks of Corning Optical Communications is available at www.corning.com/opcomm/trademarks. All other trademarks are the properties of their respective owners. Corning Optical Communications is ISO 9001 certified.

© 2017 Corning Optical Communications. All rights reserved.

CORNING